

Welcome  
to our Open  
House!  
2024-2025



Lourdes Cruz, Principal





- Welcome to the 24-25 School Year
- New Staff Introductions
- District Goals: Our Strategic Pillars
- Diversity, and Access (D.E.I.)
  - Montessori 27's "We Can Do" Initiative
- 27's School Comprehensive Educational Plan (SCEP) At-A-Glance
- 24-25 Montessori 27's Instructional Foci
- Safety Plan: NYS Emergency Response S.H.E.L.L. & Reunification

# Agenda

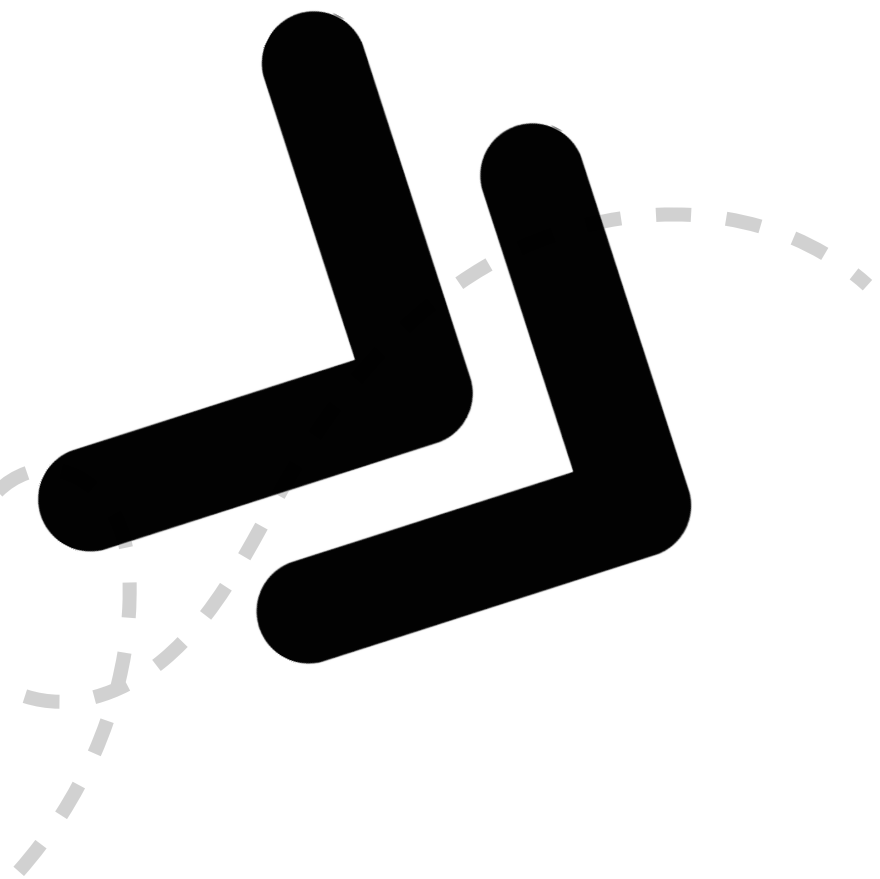


# New Faculty

- Caline Convento AU
- Kirsten Pellegrino AU
- Maryann Escudero AU
- Jacklyn DiMartino Intermediate
- Kerry Sacedo Reading Specialist
- Wendy Zaros Music
- Mara Resnick, Speech
- Sophia Marino, School Social Worker

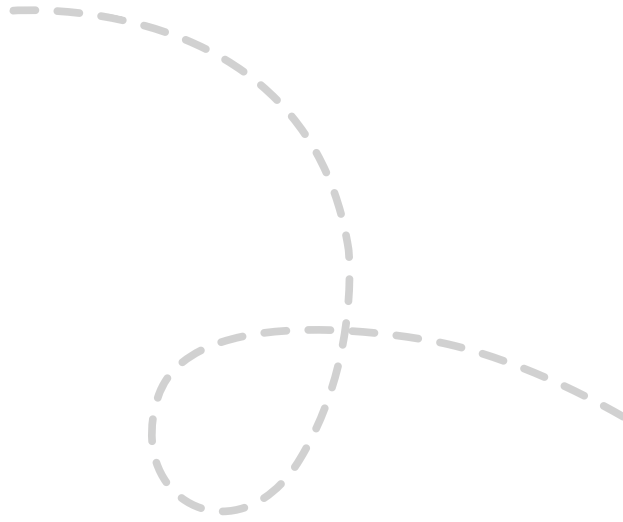




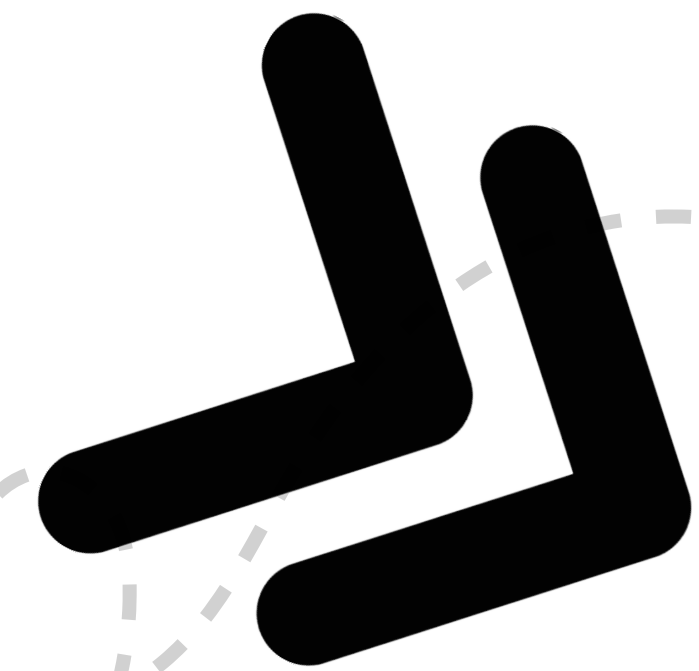


# New Staff

- Khadijah Wilson
- Leonida Sosa
- Kayla Mulvaney
- Denise Carillo
- Stefanie Velez
- Cassandra Rivera



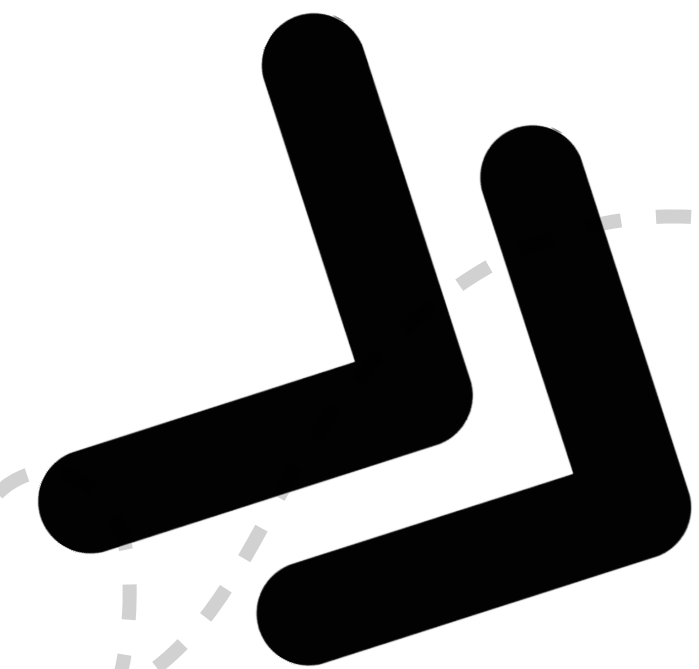




# PTA Executive Board

- President: Tania Serrano
- Vice President: Jessica Rivera
- Corresponding Secretary: Natalie Colon
- Recording Secretary: Laisa Soto
- Treasurer: Lashenda Beauharnais





Healthy Kids  
Afterschool Program  
845-330-0200  
Community Partner  
providing child care





# DIVERSITY

Demonstrated in spaces where people from different races, ethnicities, genders, gender identities, language, heritage, sexual orientations, socio-economic status, ages, physical/mental abilities, religious beliefs or political beliefs, work together for the benefit of the entire community.

Reflected in groups with different social and cultural characteristics, valuing each other and peacefully co-existing.





**Recognizes that people begin life at unequal starting places; and equity is a process that corrects inequality.**

**Identifies and removes barriers from school systems by putting the interests of the children BEFORE the interests of the adults.**

**Balances the ways people are rewarded and punished.**



# Inclusion

Creates spaces where all are welcomed, respected, supported and valued.

Ensures all students are provided a culturally-responsive and sustaining education.

Offers learning experiences that are also windows into other cultures, not only mirrors into the majority culture.





# SCEP COMMITMENTS FOR 24-25



Commitment 1: Continue to decrease chronic absenteeism by 3.0% to improve student performance on standardized test scores in reading and writing skills

2021-2022, 165 students or 45.6%

2022-2023, 102 students or 28.9%

2023-2024, 96 students or 26.8%







# SCEP COMMITMENTS FOR 24-25

Commitment 2: This school is committed to increasing Literacy and writing skills by 3% by June 2025 by implementing a writing initiative to support Literacy/writing for the 2024-2025 school year through culturally-responsive rigorous ELA instruction.

NYS ELA 2023-2024	Level 1 & 2	(+2.2%)	41.6%	Level 3 & 4	(-2.2%)	58.4%
NYS ELA 2022-2023	Level 1 & 2		39.4%	Level 3 & 4		60.6%
NYS Math 2023-2024	Level 1 & 2	(-6.9%)	39.2%	Level 3 & 4	(+6.9)	60.8%
NYS Math 2022-2023	Level 1 & 2		46.1%	Level 3 & 4		53.9%

It is important to note that 50% of the ELA exam for grades 3-5 requires writing and command of language while 40% of the exam for grades 6-8. The New York Science exam also contains 40% constructed response questions. This data shows us we have work to do.







# SCEP COMMITMENTS FOR 24-25



Commitment 3: Continue using data driven instruction and data analysis to inform instructional practices and improve student achievement in ELA and math in year four by 2% respectively







# SCEP COMMITMENTS FOR 24-25



Commitment 4: Increase family engagement to promote a culture of trust and acceptance between home, school and community as demonstrated by an increase of 3.5% of favorable responses in the Parent Panorama Survey to question, "How comfortable is your child asking a teacher for help?"



MONTESSORI 27'S

INSTRUCTIONAL FOCI FOR 24-25 CONTINUE...

# ACCOUNTABLE TALK

STUDENTS WILL SHARE THEIR THINKING WITH  
OTHERS, ENGAGE IN THOUGHTFUL  
DISCUSSION AND COMPARE IDEAS WITH  
THOSE OF THEIR PEERS.







MONTESSORI 27'S

INSTRUCTIONAL FOCI FOR 24-25

CONTINUE...

## STUDENT ENGAGEMENT

RADICAL LISTENING: TAKING THE TIME TO ACTUALLY HEAR WHAT PEOPLE ARE SAYING BEFORE RESPONDING. ALSO, STUDENTS ARE WORKING COLLABORATIVELY, ENGAGED IN DISCOURSE IN SMALL GROUPS



MONTESSORI 27'S

INSTRUCTIONAL FOCI FOR 24-25 CONTINUE...

# CRITICAL THINKING

CRITICAL LITERACY IS A CENTRAL THINKING SKILL THAT INVOLVES THE QUESTIONING AND EXAMINATION OF IDEAS, AND REQUIRES YOU TO SYNTHESIZE, ANALYZE, INTERPRET, EVALUATE AND RESPOND TO THE TEXTS YOU READ OR LISTEN TO.





MONTESSORI 27'S

INSTRUCTIONAL FOCI FOR 24-25 CONTINUE...

CHECK FOR UNDERSTANDING

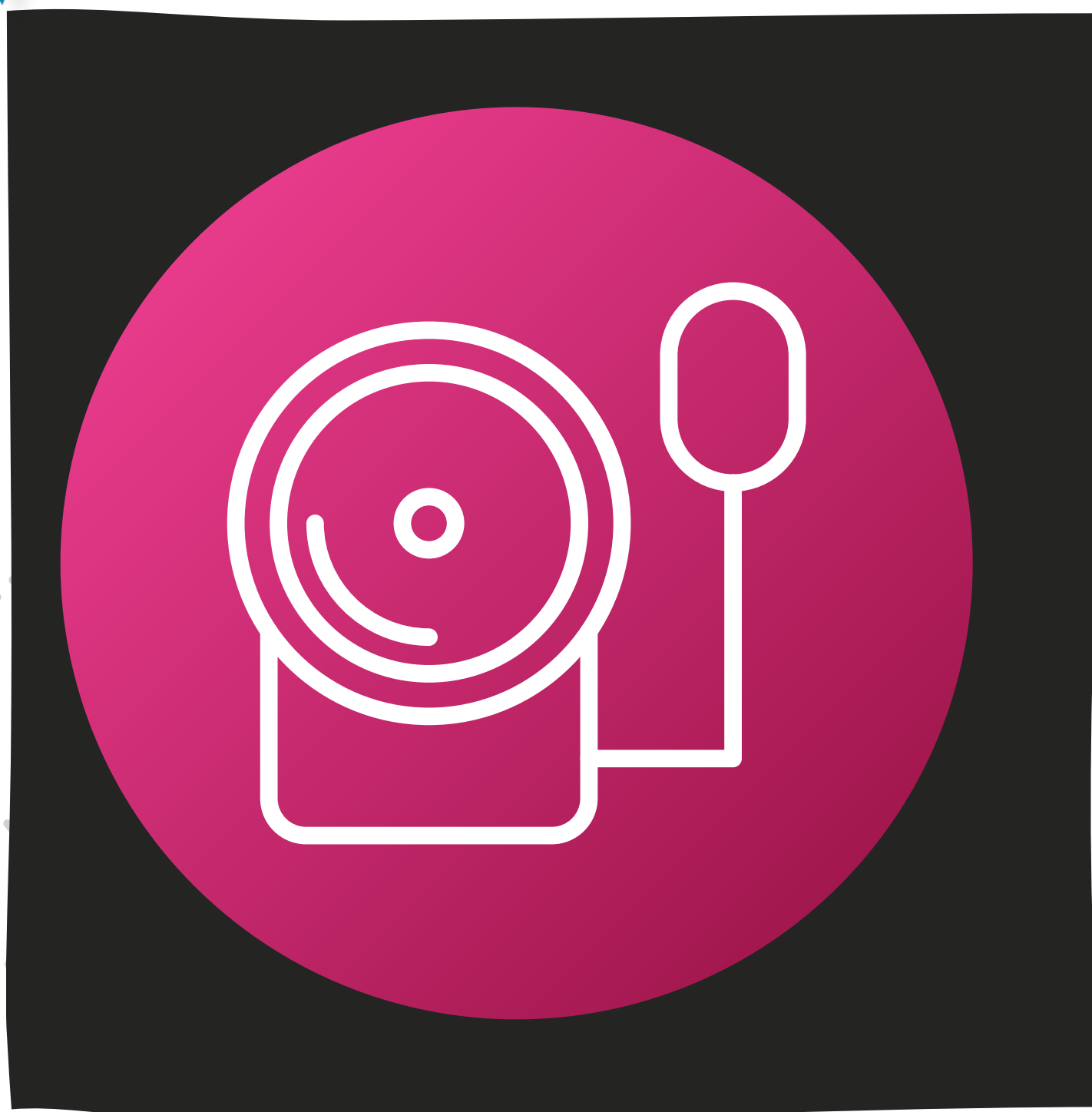
TEACHERS WILL CHECK FOR STUDENT  
UNDERSTANDING AT MULTIPLE POINTS  
THROUGHOUT A LESSON.



*NYS*

Emergency  
Response

S.H.E.L.L. Drills





Shelter-IN-Place  
Hold-IN-Place  
Evacuate  
Lockout  
Lockdown

## Proposed Dates

September 17, 19, 26, 2024

October 2, 15, 18, 30, 2024

November 4, 2024

January 30, 2025

March 5, 2025

April 24, 2025

May 6, 2025

June 5, 2025





MONTESSORI 27'S

## REUNIFICATION AREAS

PARENT CHECK-IN MAIN ENTRANCE

STUDENT STAGING AREA GYMNASIUM

PARENT REUNIFICATION AREA PLAYGROUND B  
(ENTRANCE 2 ON VALENTINE LANE)

FIRST-AID AREA-NURSE'S OFFICE

CRISIS COUNSELING AREA ROOM 120

INTERVIEW AREA LIBRARY







MONTESSORI SCHOOL 27'S  
WEBSITE

CHECK US OUT AT!  
&

FOLLOW US ON X @ PRINCIPAL LOURDES CRUZ@ MONTESSORI 27



Montessori School 27 / Homepage

 [yonkerspublicschools.org](https://www.yonkerspublicschools.org)



# THANK YOU!

On behalf of the Montessori School 27 Family  
From our family to yours

